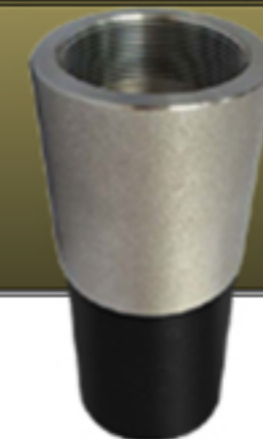


RAW MATERIAL SPECIFICATIONS	
POLY PIPE	HDPE - PE3408/4710
METALLIC BODY	304 Stainless Steel
FINISH	Plain
FINISHED PRODUCT SPECIFICATIONS	
ASTM D1599, D1598, D3350 Category 3	
FINISHED PRODUCT DESCRIPTION	
HDPE Transition, Female Pipe Thread (FNPT) Iron Pipe Size, SDR-??, PE3408/4710 Resin, 304 Stainless Steel Machined Body	

Code	Nominal Pipe Size	SDR >	SDR-7		SDR-9		SDR-11		SDR-17		DIMENSIONS		
		CODE >	07		09		11		17		A	B	C
		PSI >	336 PSI		252 PSI		202 PSI		126 PSI				
		O.D.	Part No.	Weight	Part No.	Weight	Part No.	Weight	Part No.	Weight			
007	3/4"	1.050	TF400707	0.97	TF400709	0.97	TF400711	0.97	TF400717	0.97	7.0	3.1	4.9
010	1"	1.315	TF401007	1.47	TF401009	1.47	TF401011	1.47	TF401017	1.47	7.0	3.1	4.9
012	1-1/4"	1.660	TF401207	2.38	TF401209	2.38	TF401211	2.38	TF401217	2.38	9.0	3.5	6.5
015	1-1/2"	1.900	TF401507	3.20	TF401509	3.20	TF401511	3.20	TF401517	3.20	9.0	3.8	6.3
020	2"	2.370	TF402007	4.38	TF402009	4.38	TF402011	4.38	TF402017	4.38	9.0	4.0	6.0
030	3"	3.500	TF403007	10.99	TF403009	10.99	TF403011	10.99	TF403017	10.99	10.0	5.0	6.0
040	4"	4.500	TF404007	19.31	TF404009	19.31	TF404011	19.31	TF404017	19.31	10.0	5.0	6.0
060	6"	6.625	TF406007	14.80	TF406009	14.80	TF406011	14.80	TF406017	14.80	14.0	6.0	9.0
080	8"	8.625	TF408007	15.80	TF408009	15.80	TF408011	15.80	TF408017	15.80	16.0	8.0	9.0
100	10"	10.750	TF410007	16.80	TF410009	16.80	TF410011	16.80	TF410017	16.80	18.0	10.0	9.0
120	12"	12.750	TF412007	17.80	TF412009	17.80	TF412011	17.80	TF412017	17.80	19.0	11.0	9.0
140	14"	14.000	PRICE UPON REQUEST										
160	16"	16.000											
180	18"	18.000											
200	20"	20.000											
240	24"	24.000											



Maximum Operating Pressure ratings based on PE4710 HDPE Pipe

QUALITY ASSURANCE: QMS2013-01 Rev A (comparable with ANSI ISO/ASQ Q9001-2000)

Prices subject to change without notice

